

MLS Area CM

Residential Statistics

Independence Title

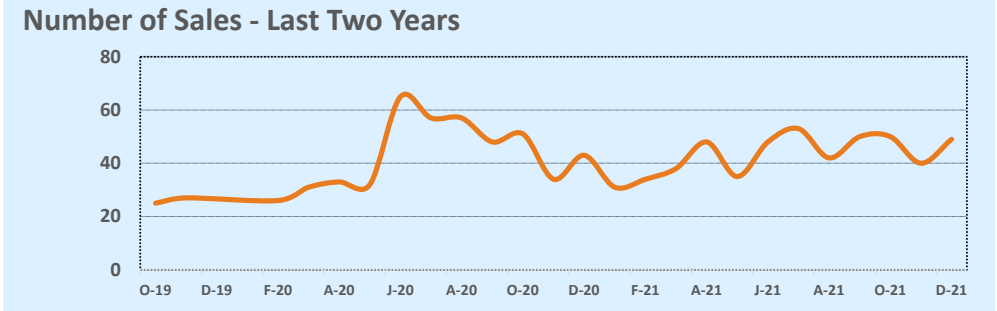
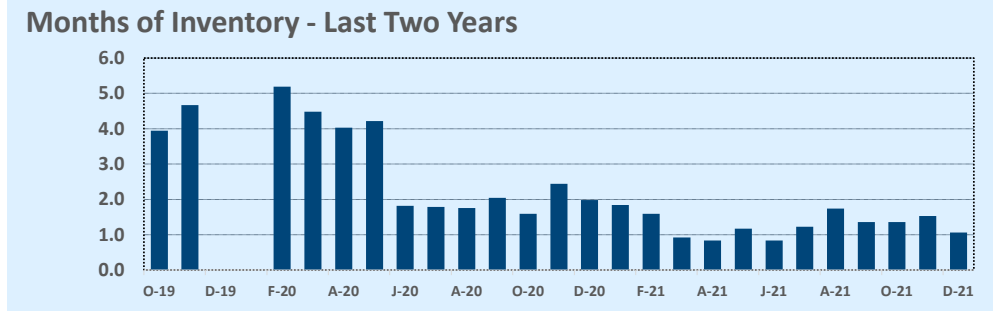
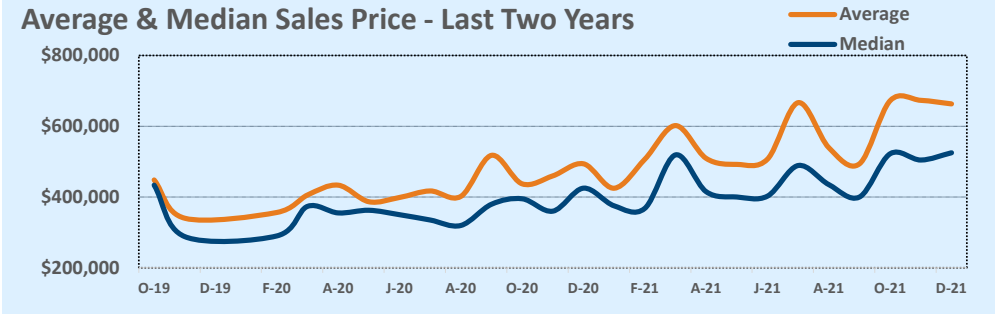
November 2021

Listings	This Month			Year-to-Date		
	Nov 2021	Nov 2020	Change	2021	2020	Change
Single Family Sales	46	42	+9.5%	504	487	+3.5%
Condo/TH Sales	3	1	+200.0%	14	17	-17.6%
Total Sales	49	43	+14.0%	518	504	+2.8%
New Homes Only	6	4	+50.0%	56	73	-23.3%
Resale Only	43	39	+10.3%	462	431	+7.2%
Sales Volume	\$32,493,455	\$21,233,945	+53.0%	\$294,988,453	\$214,291,321	+37.7%
New Listings	36	29	+24.1%	594	564	+5.3%
Pending	42	8	+425.0%	60	463	-87.0%
Withdrawn	3	2	+50.0%	57	57	--
Expired	--	--	--	--	--	--
Months of Inventory	1.1	2.0	-46.3%	N/A	N/A	--

Price Range	This Month			Year-to-Date		
	New	Sales	DOM	New	Sales	DOM
\$149,999 or under	--	--	--	7	6	103
\$150,000- \$199,999	1	--	--	15	10	40
\$200,000- \$249,999	--	1	7	35	37	19
\$250,000- \$299,999	2	6	15	47	55	25
\$300,000- \$349,999	2	4	17	62	59	22
\$350,000- \$399,999	3	2	25	63	50	13
\$400,000- \$449,999	6	6	14	51	46	19
\$450,000- \$499,999	1	3	17	33	37	26
\$500,000- \$549,999	3	2	69	30	28	35
\$550,000- \$599,999	7	3	46	42	25	25
\$600,000- \$699,999	4	6	21	50	39	35
\$700,000- \$799,999	3	1	21	27	32	52
\$800,000- \$899,999	4	2	42	24	23	37
\$900,000- \$999,999	2	2	30	19	14	57
\$1M - \$1.99M	7	6	51	77	49	62
\$2M - \$2.99M	--	1	495	10	8	130
\$3M+	--	--	--	2	--	--
Totals	36	49	26	594	518	33

Average	This Month			Year-to-Date		
	Nov 2021	Nov 2020	Change	2021	2020	Change
List Price	\$678,224	\$504,613	+34.4%	\$576,148	\$437,311	+31.7%
List Price/SqFt	\$269	\$208	+29.6%	\$229	\$183	+25.2%
Sold Price	\$663,132	\$493,813	+34.3%	\$569,476	\$425,181	+33.9%
Sold Price/SqFt	\$265	\$204	+29.7%	\$228	\$179	+27.5%
Sold Price / Orig LP	97.7%	97.3%	+0.4%	98.8%	96.1%	+2.8%
Days on Market	26	40	-34.1%	33	68	-50.8%

Median	This Month			Year-to-Date		
	Nov 2021	Nov 2020	Change	2021	2020	Change
List Price	\$525,000	\$414,900	+26.5%	\$439,700	\$355,000	+23.9%
List Price/SqFt	\$244	\$199	+22.4%	\$209	\$175	+19.4%
Sold Price	\$525,000	\$425,000	+23.5%	\$443,800	\$350,000	+26.8%
Sold Price/SqFt	\$244	\$196	+24.6%	\$209	\$172	+21.4%
Sold Price / Orig LP	98.0%	97.0%	+1.0%	100.0%	97.0%	+3.1%
Days on Market	12	30	-60.0%	11	42	-73.5%



Based on information from the Austin Board of REALTORS® (alternatively, from ACTRIS). Neither the Board nor ACTRIS guarantees or is in any way responsible for its accuracy. The Austin Board of REALTORS®, ACTRIS and their affiliates provide the MLS and all content therein "AS IS" and without any warranty, express or implied. Data maintained by the Board or ACTRIS may not reflect all real estate activity in the market.